

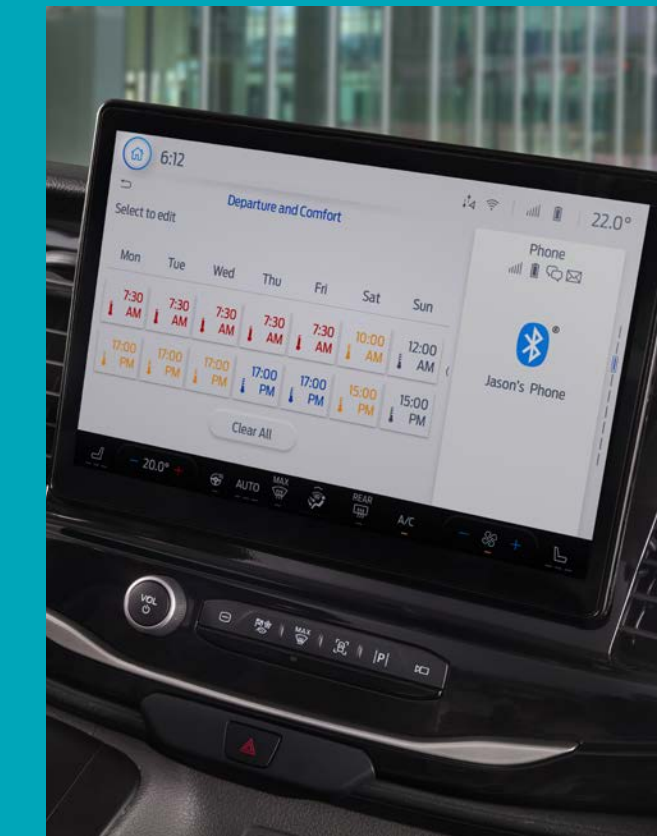
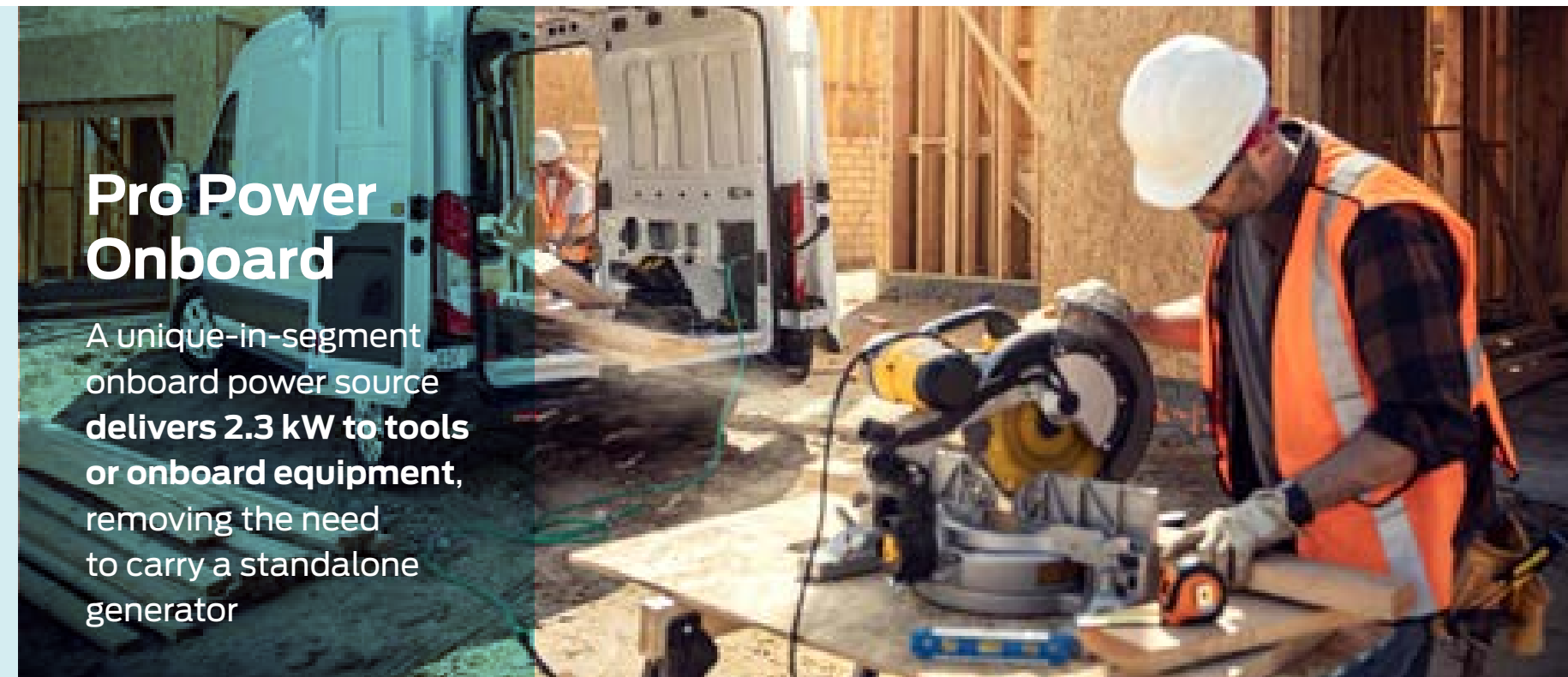
Ford E-Transit is the all-electric version of the world's best-selling cargo van, featuring next-level connected vehicle technology and services with signature Transit capability

Performance and charging

- 68 kWh usable battery capacity
- Targeted driving range of **up to 317 km/196 miles** (WLTP)
- DC fast charge capable up to 115 kW – **15–80% in 34 minutes**
- 11.3 kW onboard charger – **100% charge in 8.2 hours**
- Available with AC and DC charging options to suit **depot, home or public** charging

Pro Power Onboard

A unique-in-segment onboard power source delivers **2.3 kW to tools or onboard equipment**, removing the need to carry a standalone generator



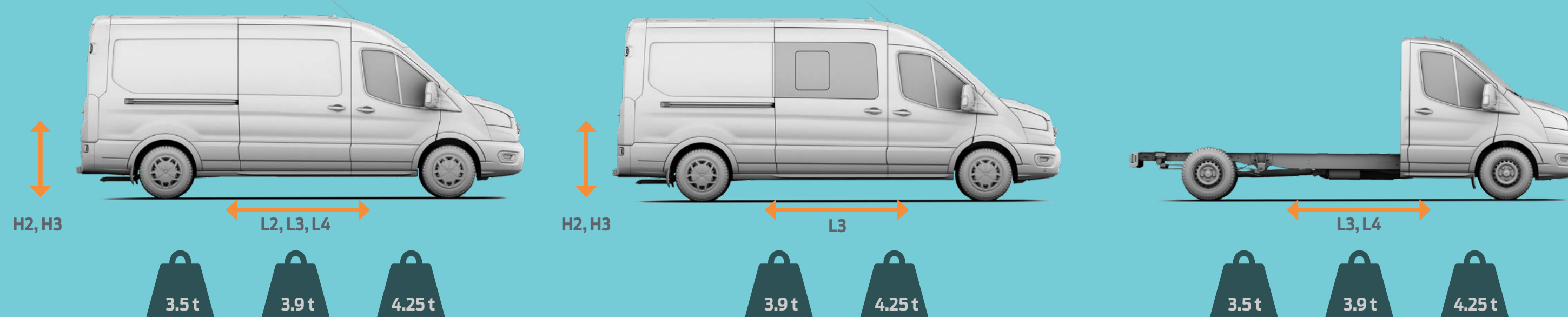
Connected ecosystem

- Full ecosystem of **connected digital solutions**
- **EV-specific tools** to optimise fleet performance
- **Monitor** energy usage, charging, and distance to empty
- Provide remote **cabin pre-conditioning**
- **SYNC 4** with standard 12-inch touchscreen
- Seamless connectivity via **FordPass Connect modem**



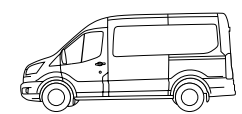
Loading and versatility

- **25 model variants** to meet customer needs
- Maximum gross payload — **1,758 kg (van), 2,090 kg (chassis cab)**
- No compromise to loadspace, with **volumes of up to 15.1 m³**
- Designed for **simple racking and conversions**



Ownership and servicing

- Best in class **one-year/unlimited mileage** service intervals
- Estimated **40% reduction** in service cost of ownership
- 8-year/160,000 km (100,000 miles) warranty on battery and high-voltage electric components ²



Officially homologated energy efficiency figures will be published closer to on-sale date. Targeted range and charge time based on manufacturer tested values and calculation according to the WLTP drive cycle. Actual range varies with conditions such as external elements, driving behaviours, vehicle maintenance, lithium-ion battery age and state of health. The declared WLTP fuel/energy consumptions, CO₂-emissions and electric range are determined according to the technical requirements and specifications of the European Regulations (EC) 715/2007 and (EU) 2017/1151 as last amended. The applied standard test procedures enable comparison between different vehicle types and different manufacturers. ² See your dealer for limited-warranty details. Images shown may not be to EU specification.

For more information please visit transit.fordpresskits.com/?p=e-transit

